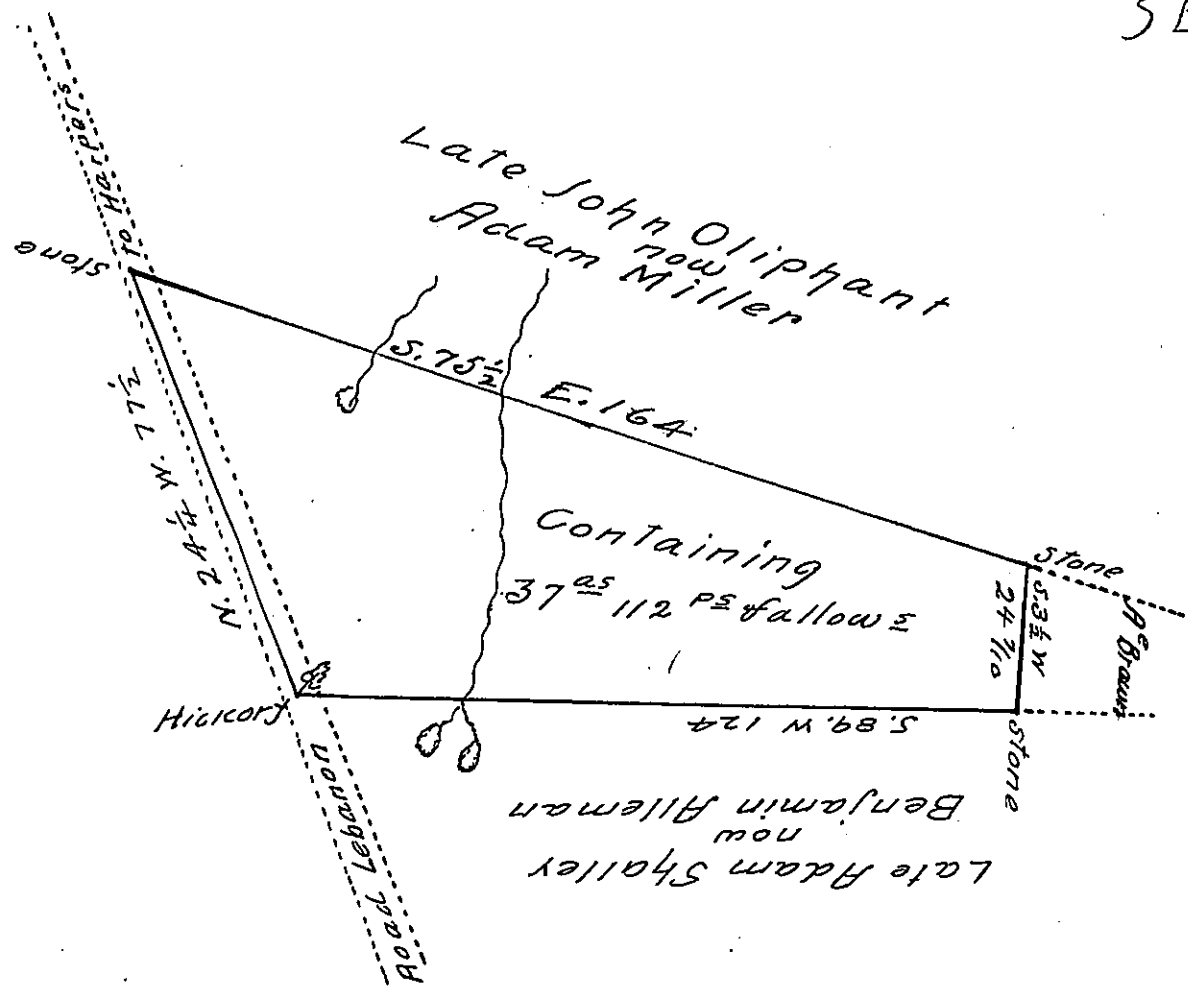


SEE ANOTHER  
SEEC-122-118



The above described tract of Land situate in Annville Township  
 Lebanon County (formerly Lebanon Township Lancaster County)  
 being part of a larger tract of Land which was Originally Sur-  
 veyed On Warrent dated the 6<sup>th</sup> day of July A.D. 1750. Granted  
 to John Hollabach. Surveyed the 4<sup>th</sup> day of December A.D. 1839  
 for Benjamin Alleman. Containing Thirty seven Acres and  
 One hundred and twelve perches and the Usual Allowance  
 of Six pr. Ct. &c.

pr. W<sup>m</sup> Rank  
 Deputy Surveyor

To Jacob Sallade Esquire  
 Surveyor General of Pennsylvania

IN TESTIMONY that the above is a copy of the original remaining on file in  
 the Department of Internal Affairs of Pennsylvania, made  
 conformably to an Act of Assembly approved the 16th day of  
 February, 1833, I have hereunto set my Hand and caused  
 the Seal of said Department to be affixed at Harrisburg,  
 this twenty-fourth day of March 1905

*Loose P. Brown*  
 Secretary of Internal Affairs.